



THE MECHANISM IN MONITORING AND ENFORCING ACCESSIBILITY STANDARDS

LEGISLATION

- **Enforcement** of Law
- Application for planning and building plans must follow the provisions of the **legislation**.
- Standards, Policies, **Guidelines and Access Statement**
- All implementing departments of KLCH shall adopt the concept of **Universal Design** when implementing or monitoring developments in Kuala Lumpur

- Person With Disabilities Act 2008
- Uniform Building By-Law (UBBL) 34 A Federal Territory – 13 August 1993 – P.U.A.305/92
- **Ms 1184 : 2014 Universal design and accessibility in the built environment** - Code of practice (Second Revision)
- Ms1183: Specification For Fire Precautions In The Design And Construction Of Buildings



GUIDELINES



ENFORCEMENT

- Access Officers in Kuala Lumpur City Hall
- coordinating with other local authorities as well as utility agencies in providing disabled-friendly environment
- Access Advisory Group / Technical Committee
- Access Inspectors (individuals/NGOs)
- Access audits on new development and existing buildings

New Development

Client's brief

DESIGN
PROCESS

CONSTRUCTION
PROCESS

POST
CONSTRUCTION



PERSON WITH DISABILITIES ACT (ACT 2008)

An Act to provide for the registration, protection, rehabilitation, development and wellbeing of persons with disabilities, the establishment of the National Council for Persons with Disabilities.

1. In House awareness workshop and programmes
2. Seminar on facilities for the Person With Disabilities
3. In House Workshop on training access audit with others agencies
4. Practical training by involving KLCH life projects
5. Upgrading KLCH existing projects and public amenities
6. Providing training for others local authorities
7. Collaboration with private sectors
8. Recognition and awards for friendly buildings and amenities
9. KLis Best

AWARENESS AND TRAINING PROGRAMMES



MONITORING STAGE

KLCH has established **a special unit** to focus on the requirements of disabled & Standards Building Innovation Unit (UIPB) in the Department of Town & Building Design (JRBB) in May 2010.

1. Ensuring the implementation of laws relating to disabled. All implementing departments in the KLCH shall always in compliance of **Universal Design** approach to implement all developments in Kuala Lumpur, **Pilot projects** are introduced as benchmark and references, Access audits for existing and new developments and Access Consultants (professionals/training)
2. This unit as the secretariat to advice and planning in KLCH; to **liaise, monitor and coordinates** all infrastructure and utility providers in terms of planning, implementation and maintenance on facilities for PWD
3. To conduct **workshop and training TOT** -Training to provide a better skills at understanding the built-environment issues and **manual for Access Audits** the facilities for the PWDs
4. Public **awareness programmes**
5. **To liason with PWDs** to be involved in the
6. planning and access audit
7. **Monitoring** and liason with others govt
8. agencies and utilities authorities and NGO



PROGRAMMES AND PUBLIC ENGAGEMENT

DEVELOPMENTAL APPLICATION PROCEDURES

All new development in Kuala Lumpur are controlled under the issuance of Development Order (D.O.). Conditions applied in D.O. require that all development comply to MS 1184, MS 1331 and MS 1183. In addition to that, all the PSP (**Submitting Principal Person**) are required to sign an undertaking as follows: "... I certify that all the needs of persons with disabilities (PWDs) to be constructed / provided are in compliance with Malaysian Standard 1183, 1184 and Disability Act 2008. I accept full responsibility accordingly.

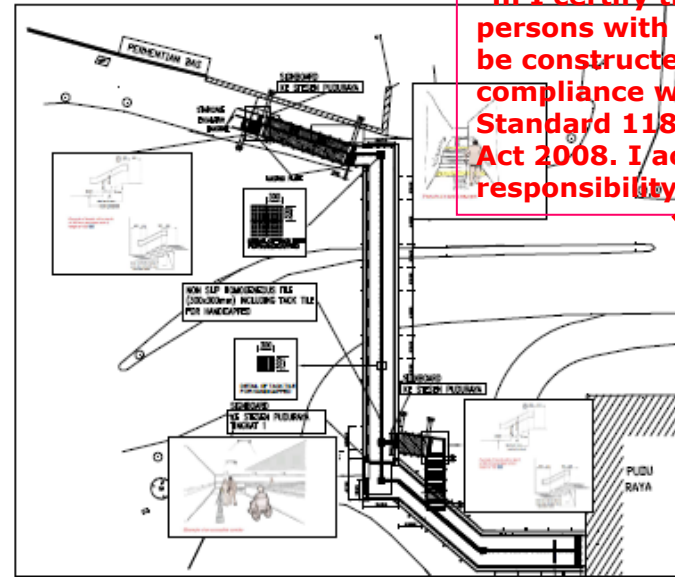
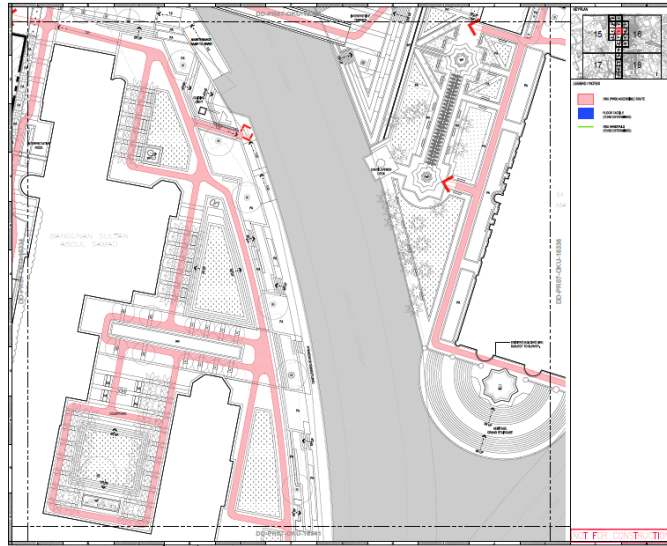
- **Standardize the process of building control Checklists** at each stage of construction
- Workshop organized by City Hall for the **training of professionals**, including PSP, such as architects, landscape architects, engineers Awareness and training **programmes on access audit** are continuously carried out among the professionals of implementing departments of KLCH such as architects, engineers and town planners and other technical professions. **Notices** are issued to building owners who fail to comply with the law
- To **encourage retrofitting and upgrading in renovation**. Monitor building owners to carry out access audits by qualified architects. Application for renovation of old buildings and existing facilities must comply the needs of disabled persons
- Collaboration from the private owners, **dialogs** between KLCH and all parties being held regularly.
- **Pilot projects** for all implementing departments
- **Awareness training** / disabled people involved in consultation/access officers/access groups/consultants



Kuala Lumpur City Hall organizing a seminar on Understanding Accessibility Statements of accessible Facilities for the Principal Submitting Person / Submitting Person which was officiated by HE.Datuk Seri Ahmad Phesal Haji Talib, Mayor of Kuala Lumpur on 8 May 2013 .The one day seminar was attended by over 200 participants from various government agencies and private sector agencies and associations, the **purpose of the seminar was to create awareness among PSP / SP, developers, contractors and those involved in the construction industry to ensure that disabled access facilities are applied in all development projects.** "in this seminar, participants will be given exposure to disabled friendly and easy access concept applications.

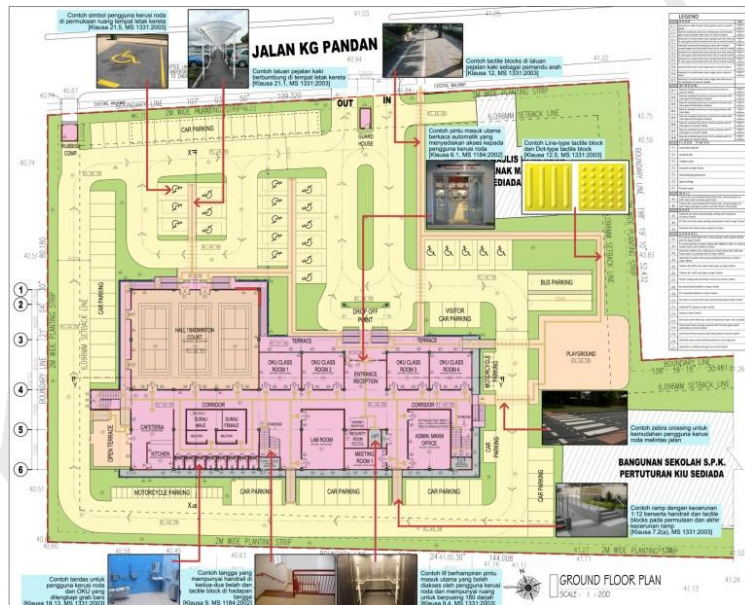


ACCESS STATEMENT

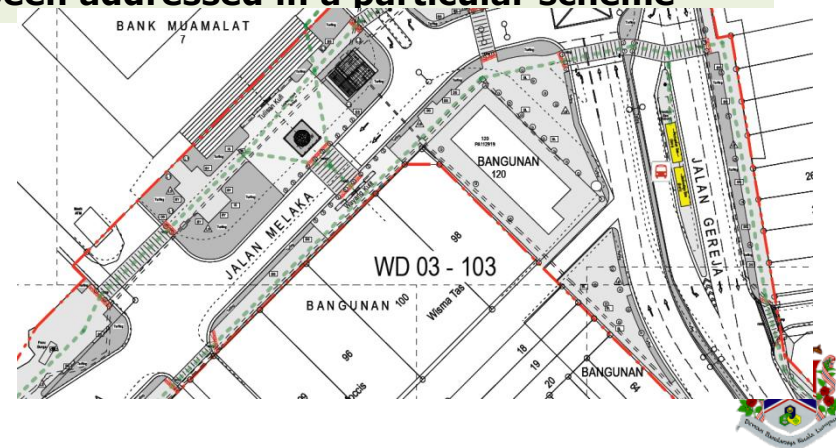


FIRST FLOOR PLAN
(ARCHITECTURAL VIEW)

"... I certify that all the needs of persons with disabilities (PWDs) to be constructed / provided are in compliance with Malaysian Standard 1183, 1184 and Disability Act 2008. I accept full responsibility accordingly."



Access Statement is document to be submitted to KLCH for approval of public buildings; an explanation of how accessibility and facilities for PWDs and others has been addressed in a particular scheme



KLCH POLICIES REGARDING PWDS

1. **Imposed fine** for abusing facilities for PWDS
2. More than 1% of employees of City Hall is PWDS
3. **Friendly counter**, training staff on **sign language**.
4. Rental **rate 50%** discount for Keramat Mall, **20% for others**.
5. **Website is easily accessible** and friendly to everyone.
6. **Promoting accessible tourism**
7. **Barrier free for all pedestrian pathways** network KL
8. Provision of **5% PWDS hawker** in KLCH hawker centres while **3% is required on private** development with 50% discount for rental payments and license
9. Provision of 2% for PWDS units Public Housing **with a 50% discount for rental payments**.
10. Enforcing laws related to PWDS standards, regulations and laws in providing disabled-friendly environment in the **Development Order for new development and all Building Approvals**
11. The PSP(principal submitting person) to submit **the Accessibility Statement** and should be responsible and 'accountable' to ensure the provision of facilities for the disabled to comply with all existing legislation, MS1184(2014), MS1183
12. Promote the concept of **Universal Design**
13. Ensure the use of (**signalized pedestrian crossings**) are provided with a "BEEPER" (priority for CBD and highly PWDS populated area)
14. Ensure all renovation, upgrading buildings and premises of City Hall and City Hall projects **to comply with universal design concept**
15. Ensure **all lifts shall be provided with disabled-friendly** facilities
16. Implementing **access audit** to all projects before handover .



IMPACT OF POLICIES AND STRATEGIES

**Upgrading /
Retrofitting
Accessible public
buildings and parks**



**policies : 4 units for
every 100 carparking**



**KLCH active in
supporting
Paralympic Games**



**Public Housing For
PWDs(339 units)**



**Disabled-friendly 1.2% of
Public Low Cost Housing**



**Economic
Empowerment
Opportunities For
PWDs(28 units)**

The owner of
Electrical shop
at PPR Sri
Sarawak is a
wheelchair
user



Another
wheelchair
user at bazaar
Jalan Masjid
India



**KLCH Providing
Accessible Vans And
Bus For Conducting
Social Activities**



**Accessible Bus and van transportation for
disabled-friendly community activities**

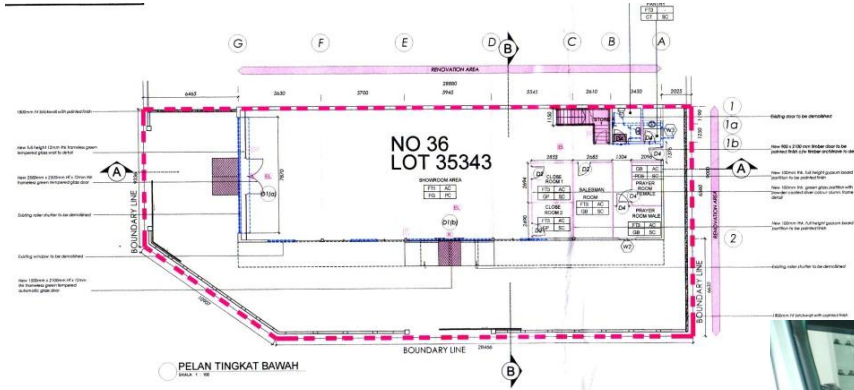
MAYOR AWARD BUILDING: REHABILITATION CENTRE



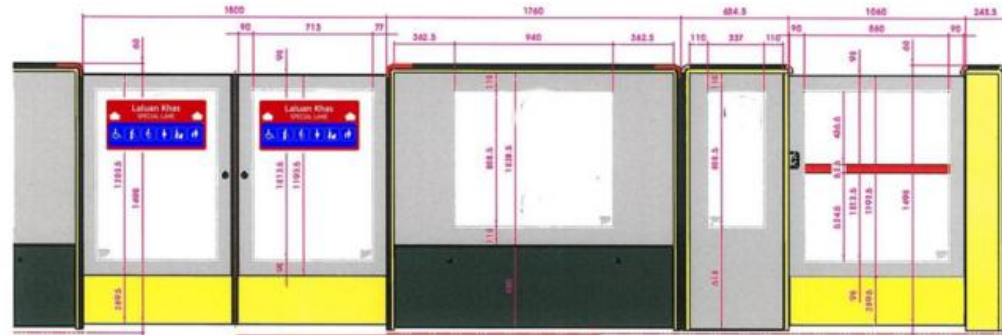
Examples of the disabled facilities implemented in projects approved by KLCH



KLCH +PRIVATE SECTOR : ACCESSIBLE CAR SHOWROOM OF PERODUA



MONITORING OF PROJECTS BY OTHER AGENCIES IN KUALA LUMPUR



Accessible facilities:

- Washrooms
- Special lane
- Tactile indicator
- Lower counter
- Clear wayfinding signages
- Accessible lift

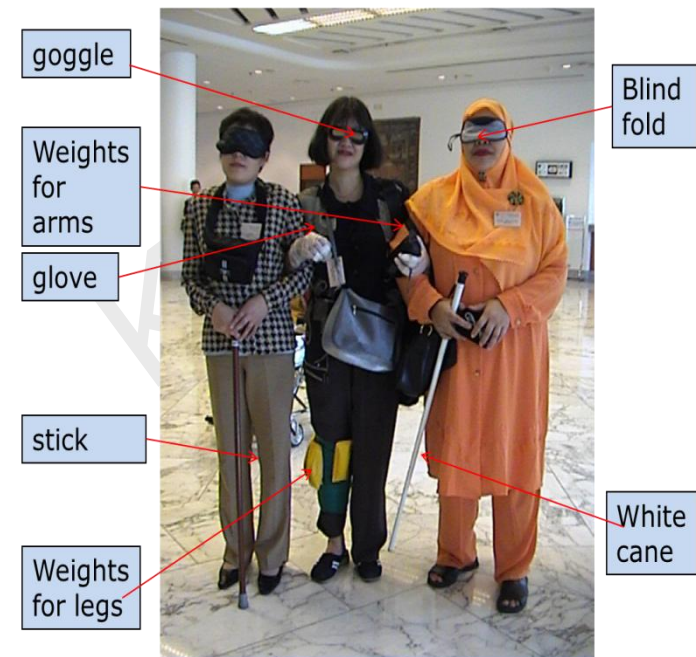


ACCESS AUDIT, SEMINAR AND WORKSHOP

City Hall has set up an **access audit unit** to monitor facilities for PWDs in creating a barrier-free environment in the city of Kuala Lumpur. The working group would need to run a simulation session with disabilities and access auditing on public facilities, proposal in the report and advise on upgrading or new development work



Simulation exercise to experience the needs of PWDs



First group of inaugural access audit workshop



PERSON WITH DISABILITIES ACTIVE ROLE IN KUALA LUMPUR

PWDs workshops

1. As speakers
2. As Facilitator
3. Access Auditors
4. As Inspector Auditors
5. Meeting and dialog
6. Awareness programmes
– Theater , workshop ,
Seminar



Sign Language Classes



Equestrian Therapy Foundation Course
KLCH has recruited for new intake as facilitators

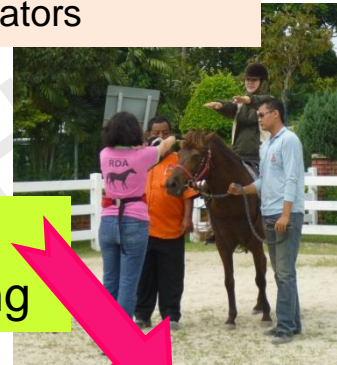
**New
program**



KL is Best

Kuala Lumpur City Hall has introduced a new system for processing of development approvals which allows real estate developers to get faster approval. Mayor Datuk Seri Ahmad Phasal Talib said the system known as "Kuala Lumpur Integrated Submission, Be Systematic, and Transparent" (KL IS BEST), is expected to shorten the processing period to only four months from six to eight months currently. "

**Job
coaching**



**Equestrian Therapy
Foundation Course**



Among the future strategies KLCH has plan is the collaboration between various government agencies and NGO to conduct seminar, workshops and public engagement to implement pilot project as the catalyst for expedite the accessibility in the built environment such as:

KLCH had conduct Seminar on Accessibility and Universal Design For "**Hotel Provider**" on 24 April 2014 at the Double Tree By Hilton Hotel Kuala Lumpur

SEMINAR REKABENTUK SEJAGAT DAN AKSESIBILITI UNTUK Pengendali Hotel

SEMINAR ON UNIVERSAL DESIGN AND ACCESSIBILITY FOR Hoteliers

TARIKH
Khamis, 24 April 2014

MASA
8.00pg - 5.30ptg

Untuk sebarang maklumat lanjut sila hubungi Sekretariat di:
Jabatan Perancangan Fizikal,
Bahagian Rekabentuk dan Estetika Bandar
03 - 2617 6595 / 6601

Urusetia:
Mohamed Zahri Bin Latif, Norazla Bt. Dahari, Habibah Bt. Wahanan

Penganjur bersama

www.facebook.com/kulaccess2014

SEMINAR REKABENTUK SEJAGAT DAN AKSESIBILITI UNTUK PIHAK BERKUASA TEMPATAN

SEMINAR ON UNIVERSAL DESIGN AND ACCESSIBILITY FOR LOCAL AUTHORITIES

DIRASMIKAN OLEH
YBhg. Datuk Seri Hj. Ahmad Phesal Bin Hj. Talib
Datuk Bandar Kuala Lumpur

TARIKH
3 & 4 Jun 2014 (Selasa & Rabu)

TEMPAT
Dewan Perdana Mestika,
City Hall Training Institute, Kuala Lumpur

14
N UNIVERSAL
ACCESSIBILITY

Seminar '2014'-Kul Access Universal Design and Accessibility for **Local Authorities** 3 to 4 June 2014 Prime Mestika Hall, City Hall Training Institute, Kuala Lumpur

SEMINAR REKABENTUK SEJAGAT DAN AKSESIBILITI UNTUK PIHAK BERKUASA TEMPATAN

SEMINAR ON UNIVERSAL DESIGN AND ACCESSIBILITY FOR LOCAL AUTHORITY

TARIKH
Selasa & Rabu, 3-4 Jun 2014

MASA
8.00pg - 5.00ptg

TEMPAT
Dewan Perdana Mestika, Institut Latihan Dewan Bandaraya Kuala Lumpur (IDB),
No. 19, Jalan Yaacob Latif (Jalan Tenteram), Bandar Tun Razak, Cheras, 56000 Kuala Lumpur.

Untuk sebarang maklumat lanjut sila hubungi Sekretariat di:
Jabatan Perancangan Fizikal,
Bahagian Rekabentuk dan Estetika Bandar
03 - 2617 6595 / 6601

Penganjur bersama

Kuala Lumpur Ke Arah Bandar Bebas Halangan

Anjuran Bersama

DEWAN BANDARAYA KUALA LUMPUR

STANDARDS MALAYSIA

JABATAN PERANCANGAN FIZIKAL

LEMBAGA PERANCANGAN DAN BINAAN

KUL ACCESS 2014

SEMINAR ON UNIVERSAL DESIGN AND ACCESSIBILITY

SEMINAR REKABENTUK SEJAGAT DAN AKSESIBILITI UNTUK KONTRAKTOR BINAAN

SEMINAR ON UNIVERSAL DESIGN AND ACCESSIBILITY FOR BUILDING CONTRACTORS

DIRASMIKAN OLEH
YBhg. Datuk Seri Hj Ahmad Phesal Bin Hj. Talib
Datuk Bandar Kuala Lumpur

TARIKH
Selasa, 12 Ogos 2014

TEMPAT
Pacific Ballroom, Seri Pacific Hotel Kuala Lumpur,
Jalan Putra, Kuala Lumpur.





Handicapped Equestrian Centre KLCH



ACCESSIBLE CITY



Training

KL Mayor Universal Access Award

Benchmark for other LA

Pilot projects

PWDs



KLCH

Access statement

Access audit

Planning strategy

CONCLUSION

Thus, efforts to create **Accessible City** for the urban population whilst to ensure a sustainable development require **continuous and an endless commitment from the various level in the governments, NGO and the private sectors**. KLCH desires to work closely with all various organizations and individuals to materialize the success of the vision of KL structure plan 2020 towards a World Class City by year 2020.

These divine intentions to create **Universal Design Environment** can be achieved through **vigorous and collaborative effort among all sectors to provide the PWDs the physical and infrastructure facilities in the urban environment** by integrating designs into the building interior, spaces between buildings, open spaces, parks and recreational areas, market places, school, public halls, the roads/walkways and commercial spaces.

